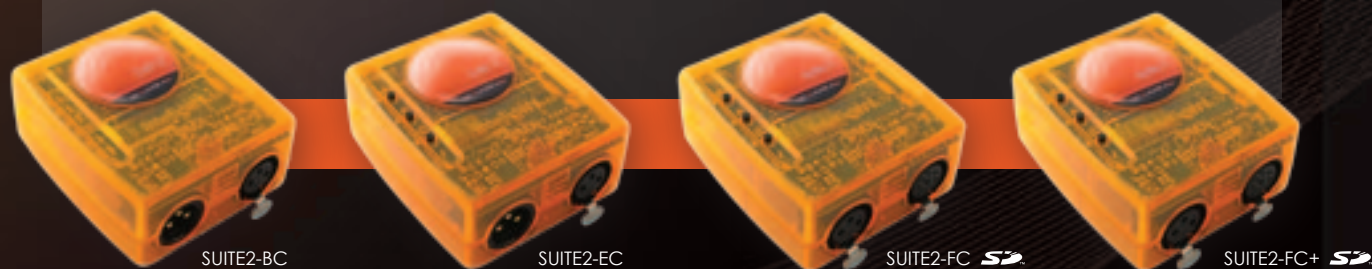


The complete suite of professional lighting software

Starting with the SUITE2-BC, the Suite 2 range includes 4 packages, compatible with both Sunlite Suite and Suite 2 software. The latest generation of USB-DMX interfaces from Nicolaudie is fully compatible with 64-bit Windows and offers a powerful protection against non authorized copies using the NAP (Nicolaudie Anti Piracy) technology.



LIVE USE WITH PC

STAND ALONE USE

| | SUITE2-BC Basic Class | SUITE2-EC Economy Class | SUITE2-FC First Class | SUITE2-FC+ First Class + |
|-----------------------------|--------------------------|----------------------------|--------------------------|-----------------------------|
| DMX channels | 512(IN) 512(OUT) | 2x512 | 3x512 | 3x512 |
| Ethernet channels (Art-Net) | | 2x512 | 4x512 | Unlimited |
| Easy View | Limited | Limited | Full | Full |
| Easy Show | | | • | • |
| MIDI live control | • | • | • | • |
| MIDI TIME CODE (IN-OUT) | | | • | • |
| PC clock triggering | | | • | • |
| PORTS triggering | | • | • | • |
| DMX channels | | 512 | 2x512 | 2x512 |
| Infrared Remote Control | | | • | • |
| Stand Alone memory | | 64K | miniSD | miniSD |
| PORTS triggering | | • | • | • |
| Clock/calendar triggering | | • | • | • |
| Multi-zone | | | • | • |
| Easy Stand Alone | | • | • | • |
| ESA PRO | | | • | • |

Compatible with Windows XP/VISTA/SEVEN 32-bit or 64-bit version. Delivered with an installation CDROM including user manual. Electronic Interface Dimensions/Weight 78mmx92mmx41mm/120g Package Dimensions/Weight 185mmx248mmx57mm/400g

SHOW & ENTERTAINMENT LIVE USE WITH COMPUTER



SUNLITE SUITE 2
COMPUTERIZED LIGHTING CONTROLLER





SUNLITE SUITE 2

Our product has been evolving over the past few years, becoming one of the industry leaders in lighting control software. The latest generation of our controller software, the Suite 2, offers the best control of your lighting. The Suite 2 can provide the ideal solution for any application: TV, theaters, clubs, live shows, sound&light, architectural, rental, mobile dj, and multimedia...

CYCLES

The new cycle, or cue list, editor has a timeline built in. You can drag and drop buttons on the timeline to easily program cycles.

MAIN CONTROL

This toolbar offers master control of your fixtures' light beam. The toolbar gives you control of the dimmer, zoom, shutter, and the iris.



THE GROUPS

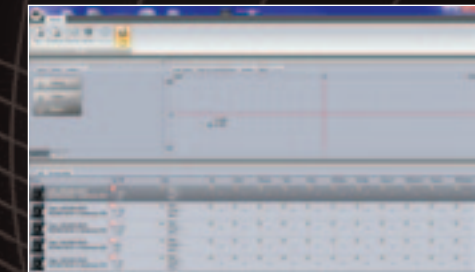
Fixtures can be grouped, allowing several fixtures to be controlled on the fly. The CLEAR ALL and AUTO RELEASE functions allow live edits to be quickly reset, therefore helping avoid adding mistakes to your program.

LIVE CONTROLS

The color picker and X/Y windows allow real-time control of the related channels. Using these controls you can easily change the color and position of your beams while a sequence is running.

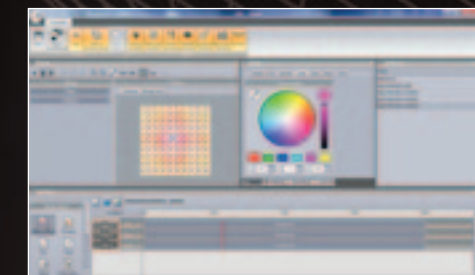
PALETTES

Palettes are available for positions, colors, beams or any other channel. If a scene has been created using palettes, it can be updated by simply editing the palettes. Playing the same show on several stages with various dimensions now becomes much easier.



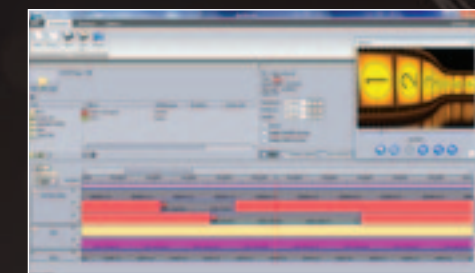
TIMELINE EDITOR

The new EasyTime editor is now based on a timeline. Thanks to this new tool, programming your show is now easier than ever. Various effects, either static or dynamic (matrix effects, shapes...) are available and can be dragged to the timeline. Whether you are controlling moving heads or LED strips this is the perfect tool.



EASY SHOW

Lighting, audio, video and Midi Time Code can easily be synchronized using Easy Show. Simply create your switches and scenes as usual from Sunlite and drag them to the Easy Show playback timelines.



EASY VIEW

Our real-time 3D visualizer offers the possibility to pre-program your show and see your fixtures on the computer screen! Thanks to the new SSL2 fixtures' library, it is now possible to visualize the majority of your lighting effects.



EASY REMOTE

Control and program your show with your iPad. Design your own controller, download the EasyRemote app and connect via a Wifi network. From setting palettes to triggering scenes, lighting control has gone portable.

